



Mountain View  
Whisman  
School District

# Enrollment Update

October 2021



# Alignment to Strategic Plan

## Goal 1: Student Achievement

- Every student will be prepared for high school and 21st Century citizenship.

## Board of Trustees Goal:

- Place all students at their neighborhood schools
- Eliminate combination classes

# Enrollment Update

- Enrollment determines number of teachers at each site:
  - Staffing Ratio: schoolwide *averages* in the following grades Kindergarten through 3<sup>rd</sup> grades: 24:1
  - 4th and 5th grades: 30:1
  - 6th, 7th and 8th grades: 180 contacts per day or 33 in any one core class period
- Students do not come in “groups of 24”

# Things to Remember

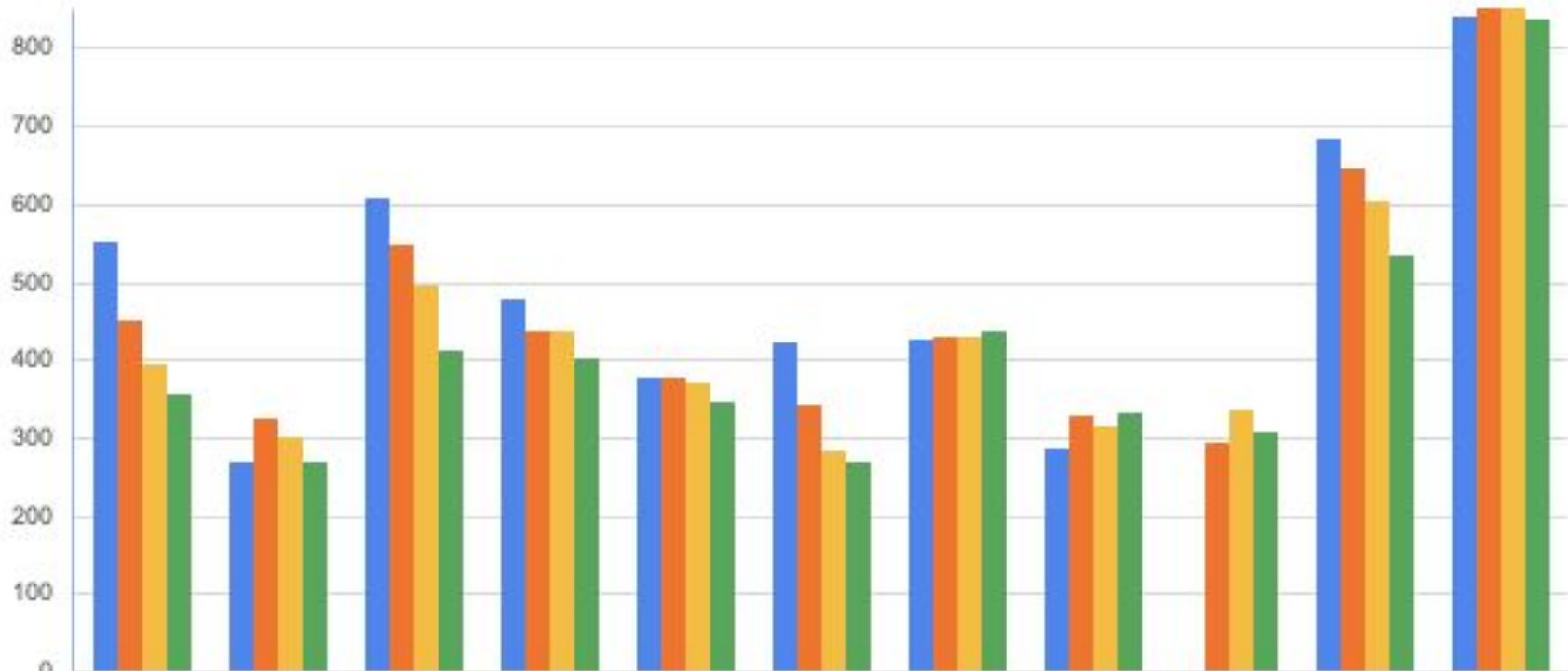
- 2020-21 was the first year the new boundaries were fully implemented
- Due to COVID, many families have moved or made changes for their families
- Remote Independent Study was made available as an option for families who needed to keep their children at home due to health risks



Mountain View  
Whisman  
School District

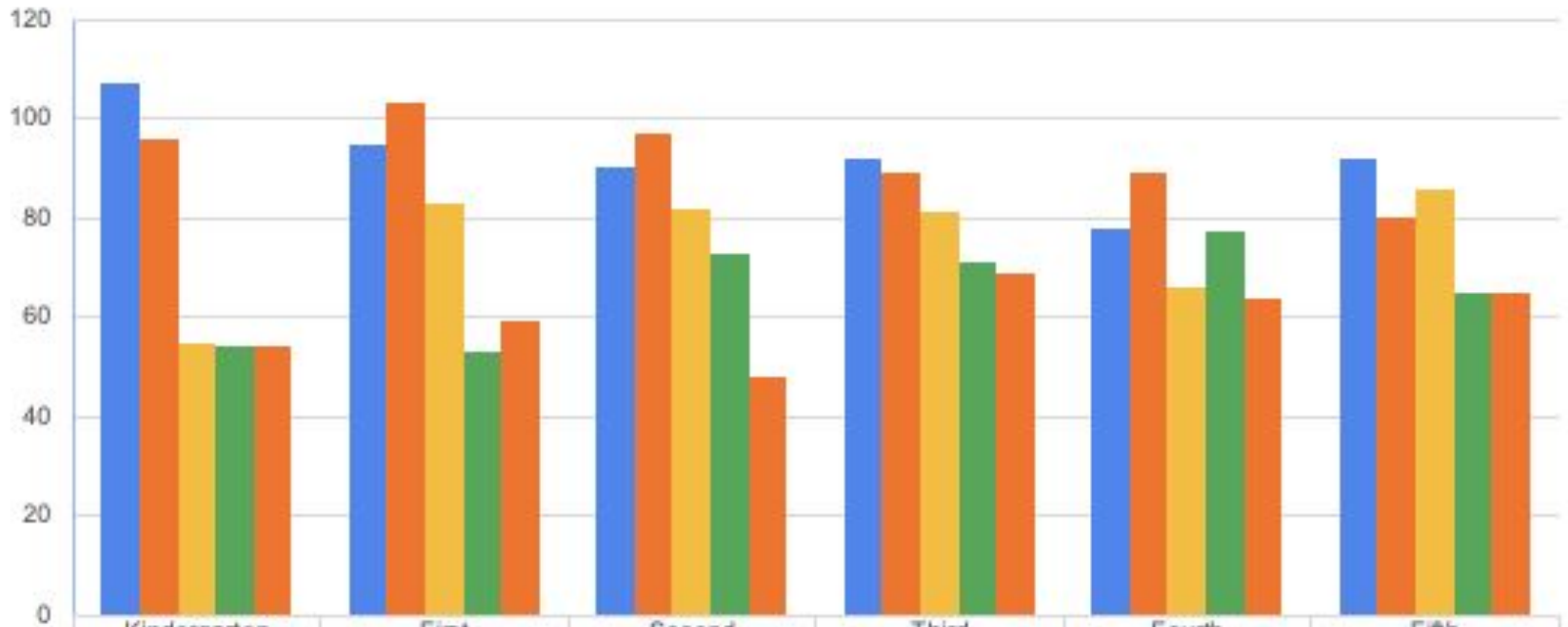
# Enrollment Updates by School Site *September 2017 to September 2021*

## Enrollment Counts



	Bubb	Castro	Imai	Landels	Mistral	Monta Loma	Stevenson	Theuerkauf	Vargas	Ciftenden	Graham
■ 2018-19	554	269	608	480	377	425	428	286		685	843
■ 2019-20	453	326	549	436	379	342	431	330	293	646	860
■ 2020-21	394	303	497	437	372	284	432	314	336	604	862
■ 2021-22	359	270	414	401	347	271	437	333	308	535	838

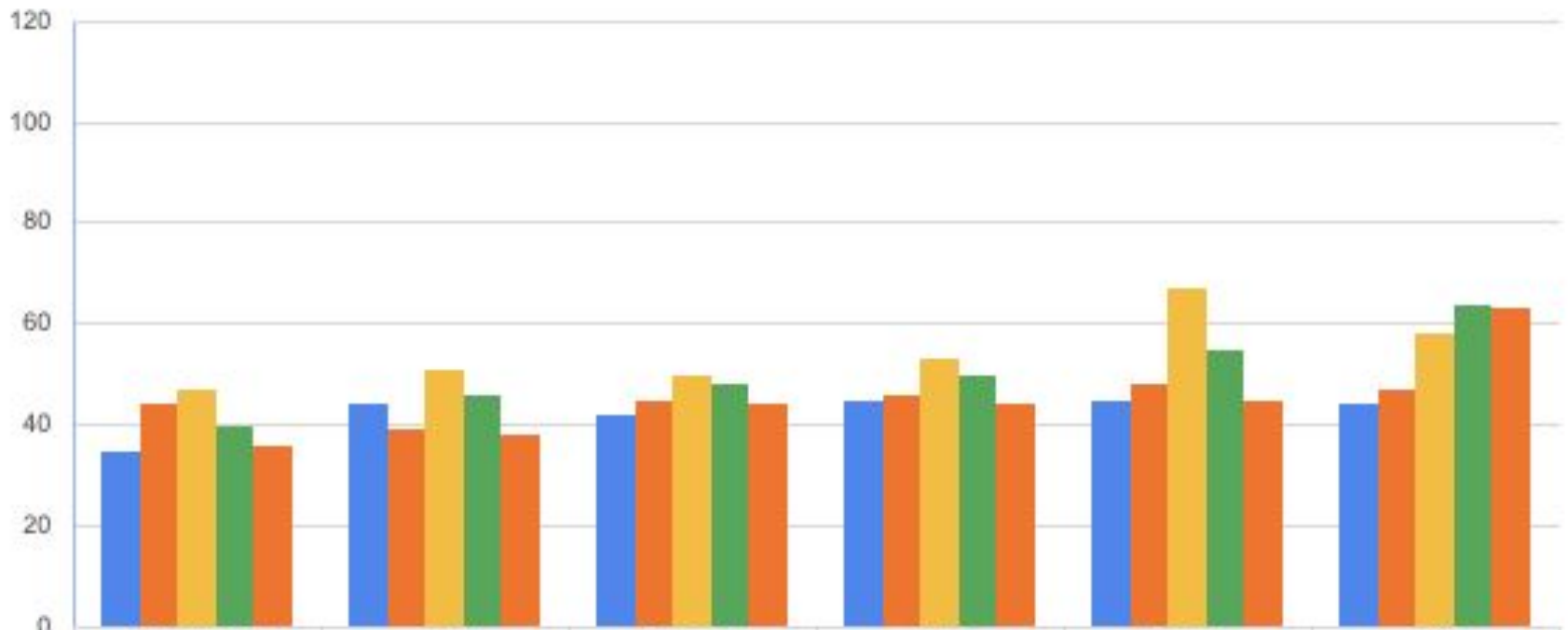
## Bubb Enrollment by Grade



	Kindergarten	First	Second	Third	Fourth	Fifth
■ 2017-18	107	95	90	92	78	92
■ 2018-19	96	103	97	89	89	80
■ 2019-20	55	83	82	81	66	86
■ 2020-21	54	53	73	71	77	65
■ 2021-22	54	59	48	69	64	65

Enrollment includes students in general education classes as well as SAI classes

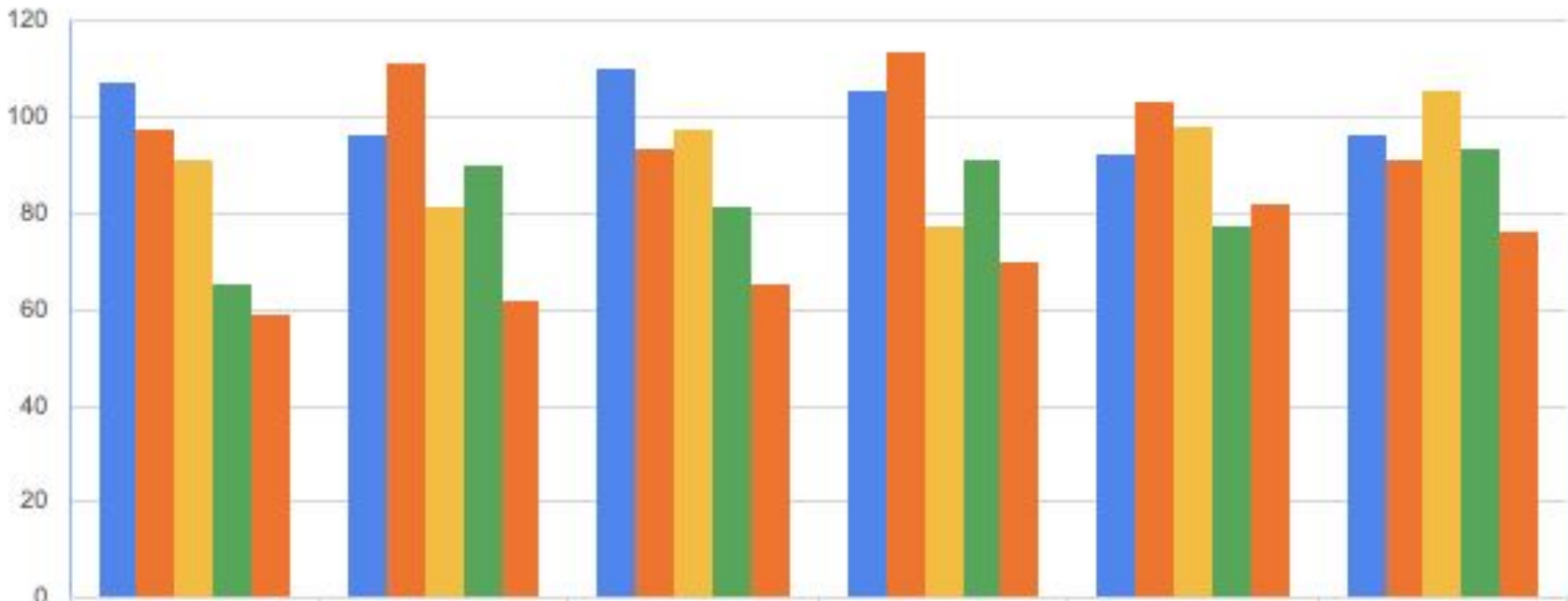
## Castro Enrollment by Grade



	Kindergarten	First	Second	Third	Fourth	Fifth
■ 2017-18	35	44	42	45	45	44
■ 2018-19	44	39	45	46	48	47
■ 2019-20	47	51	50	53	67	58
■ 2020-21	40	46	48	50	55	64
■ 2021-22	36	38	44	44	45	63

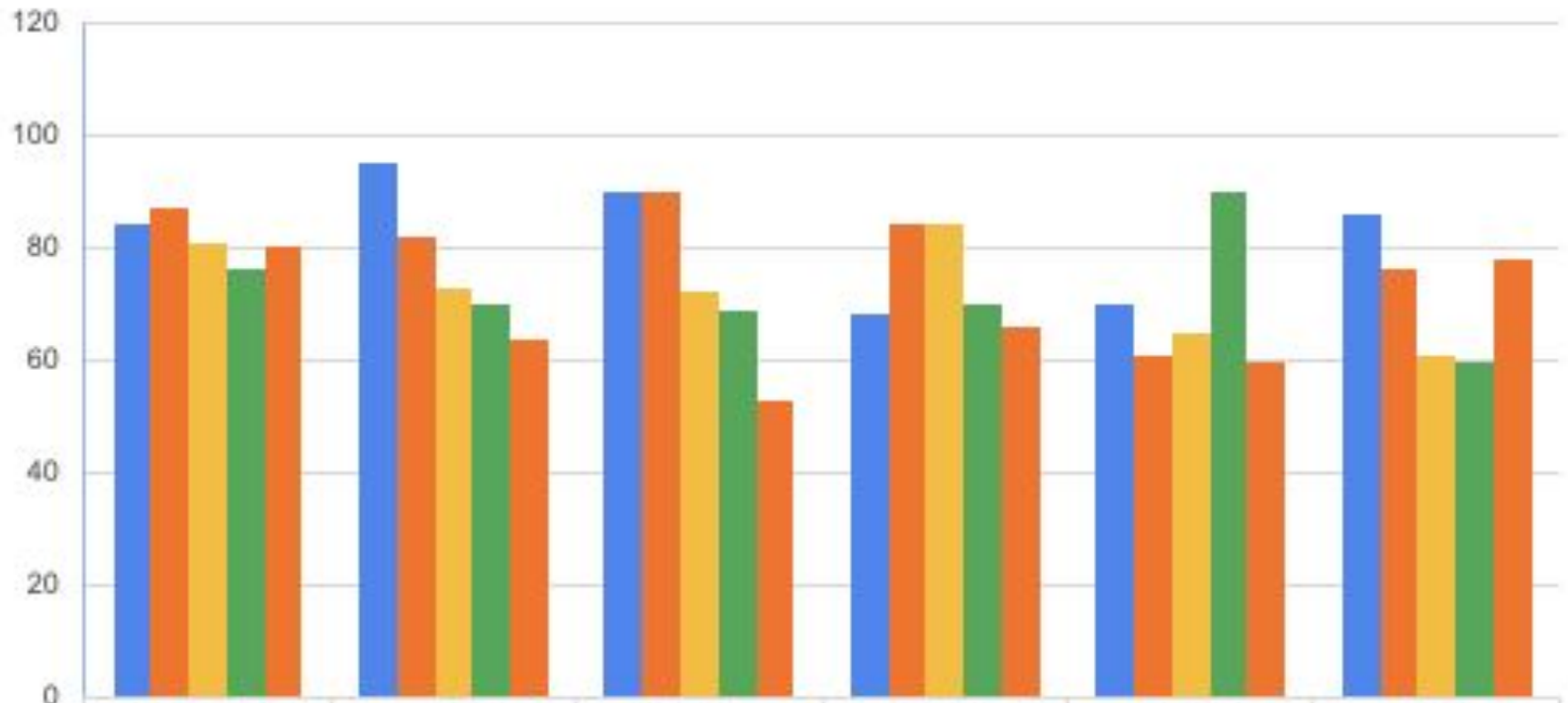


## Imai Enrollment by Grade



	Kindergarten	First	Second	Third	Fourth	Fifth
2017-18	107	96	110	105	92	96
2018-19	97	111	93	113	103	91
2019-20	91	81	97	77	98	105
2020-21	65	90	81	91	77	93
2021-22	59	62	65	70	82	76

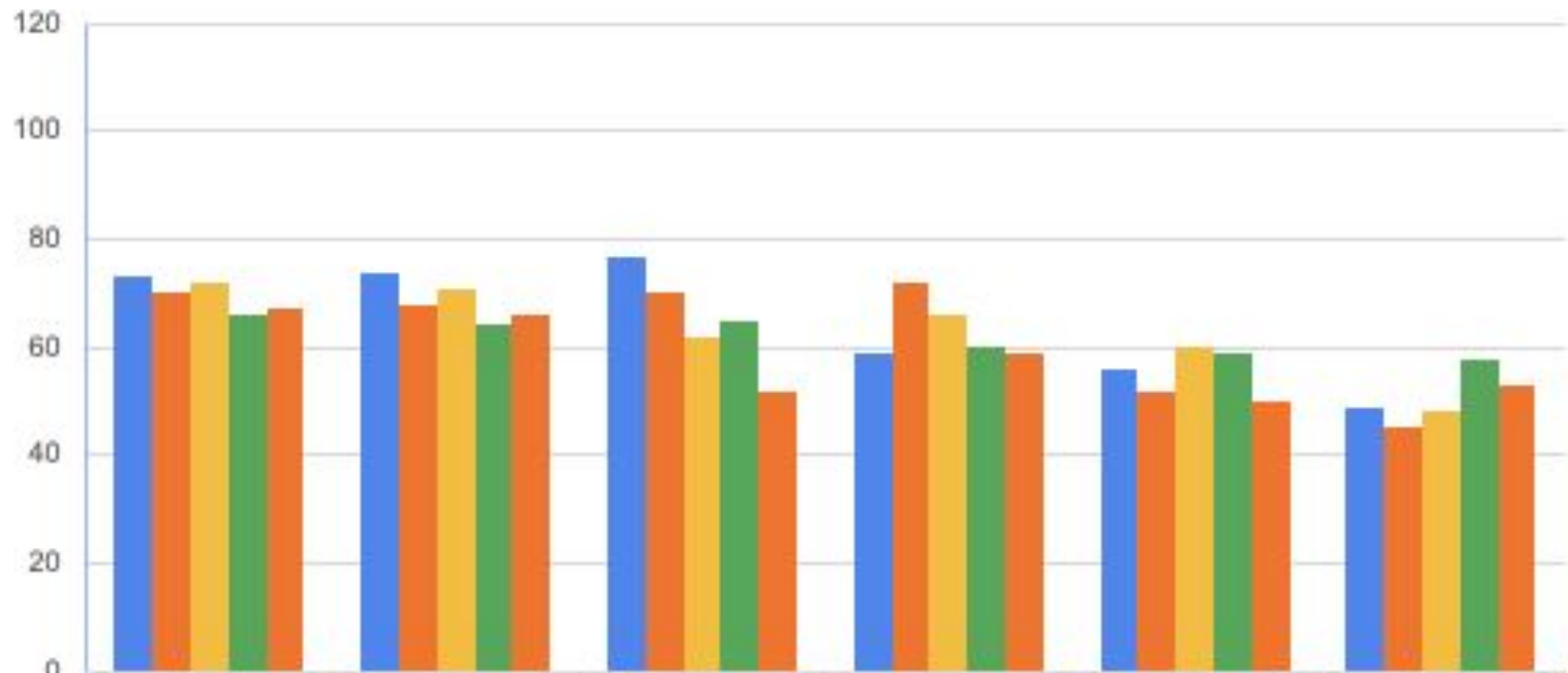
## Landels Enrollment by Grade



	Kindergarten	First	Second	Third	Fourth	Fifth
2017-18	84	95	90	68	70	86
2018-19	87	82	90	84	61	76
2019-20	81	73	72	84	65	61
2020-21	76	70	69	70	90	60
2021-22	80	64	53	66	60	78

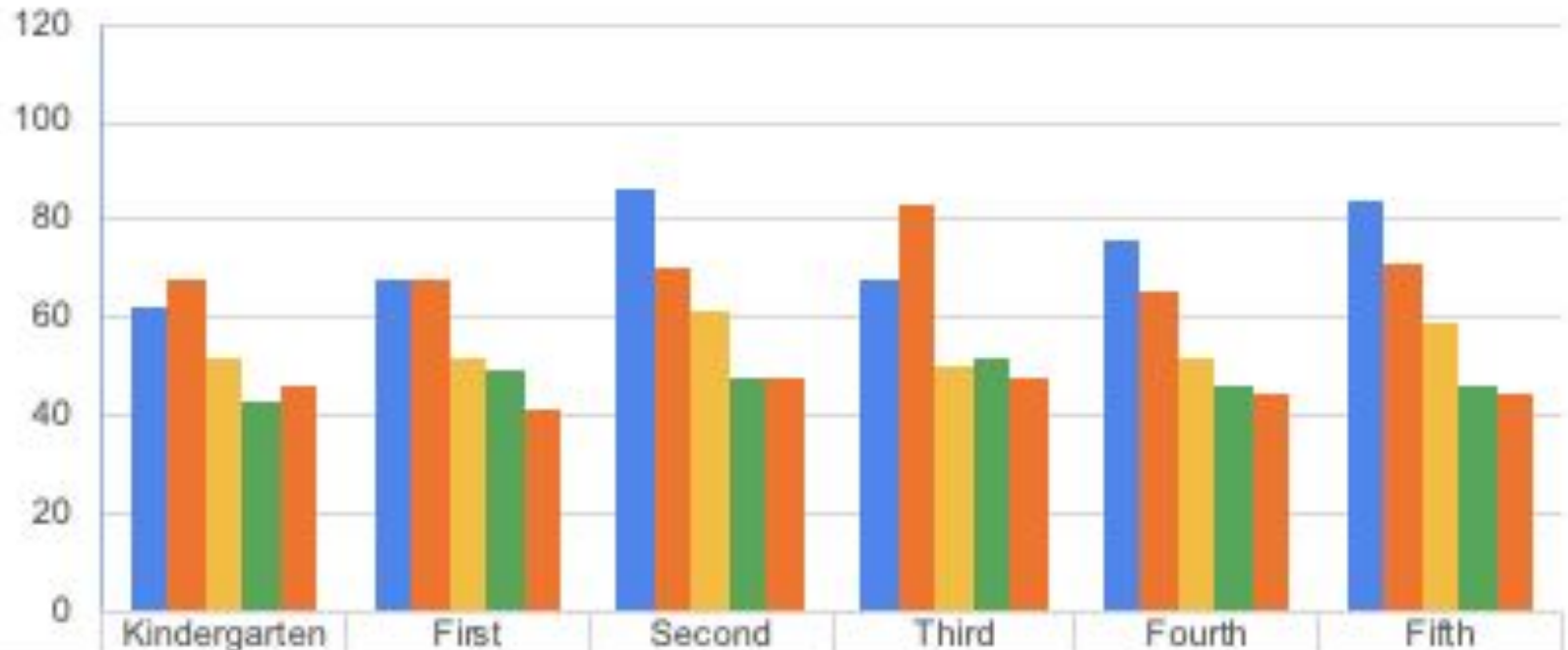
Enrollment includes students in general education classes as well as an SAI class

## Mistral Enrollment by Grade



	Kindergarten	First	Second	Third	Fourth	Fifth
■ 2017-18	73	74	77	59	56	49
■ 2018-19	70	68	70	72	52	45
■ 2019-20	72	71	62	66	60	48
■ 2020-21	66	64	65	60	59	58
■ 2021-22	67	66	52	59	50	53

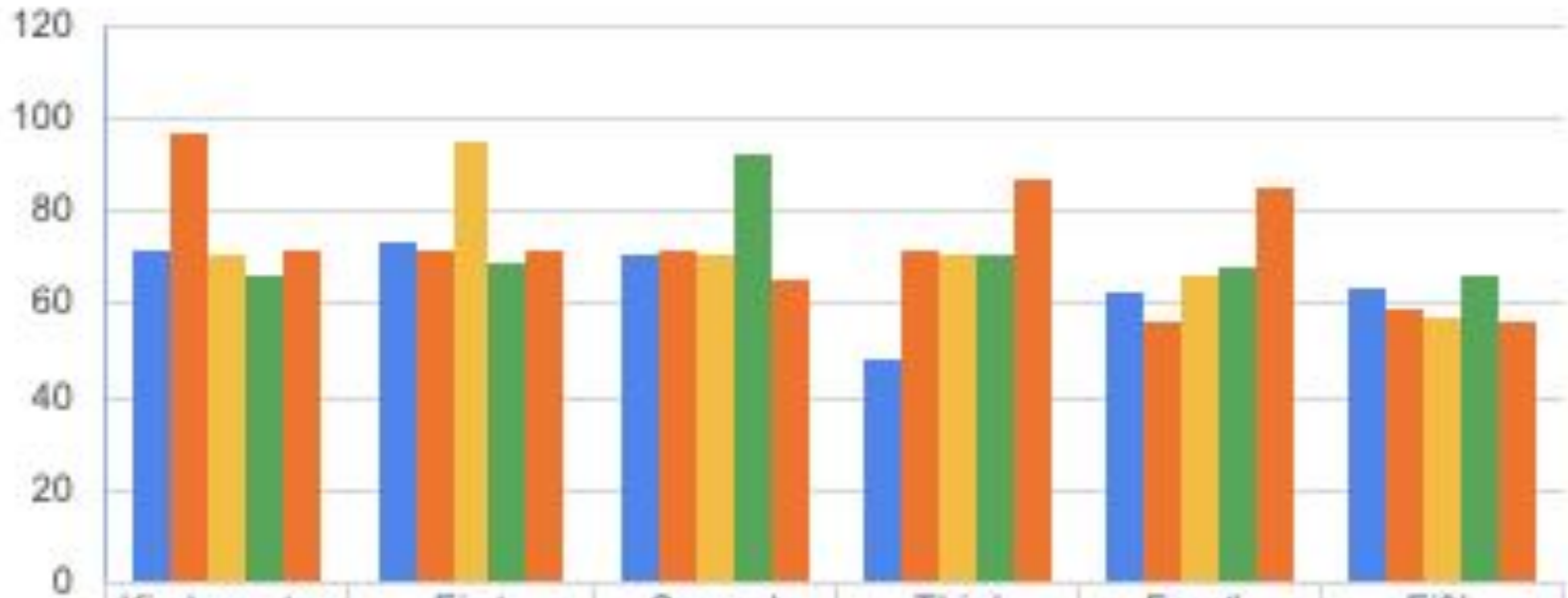
## Monta Loma Enrollment by Grade



	Kindergarten	First	Second	Third	Fourth	Fifth
2017-18	62	68	86	68	76	84
2018-19	68	68	70	83	65	71
2019-20	52	52	61	50	52	59
2020-21	43	49	48	52	46	46
2021-22	46	41	48	48	44	44

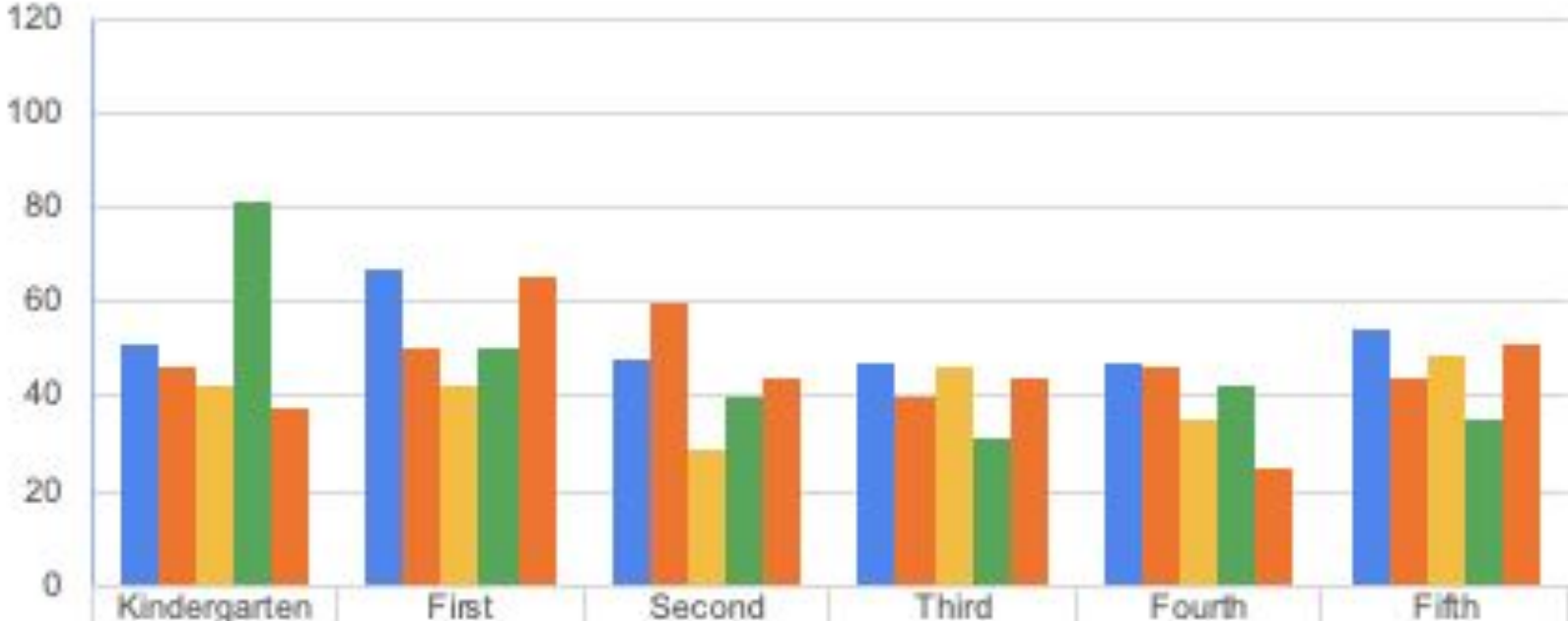
Enrollment includes students in general education classes as well as SAI classes

## Stevenson Enrollment by Grade



	Kindergarten	First	Second	Third	Fourth	Fifth
2017-18	72	73	71	48	63	64
2018-19	97	72	72	72	56	59
2019-20	71	95	71	71	66	57
2020-21	66	69	92	71	68	66
2021-22	72	72	65	87	85	56

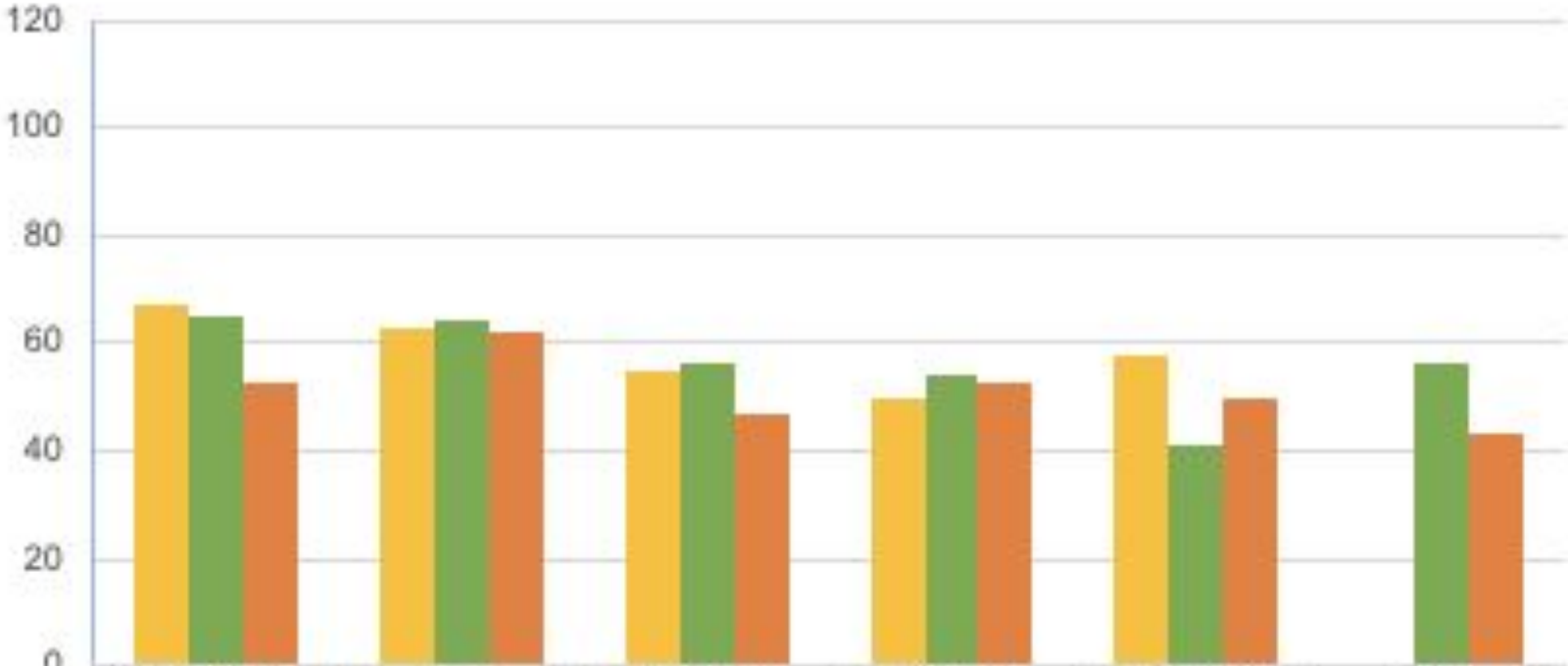
# Theuerkauf Enrollment by Grade



	Kindergarten	First	Second	Third	Fourth	Fifth
2017-18	51	67	48	47	47	54
2018-19	46	50	60	40	46	44
2019-20	42	42	29	46	35	49
2020-21	81	50	40	31	42	35
2021-22	38	65	44	44	25	51

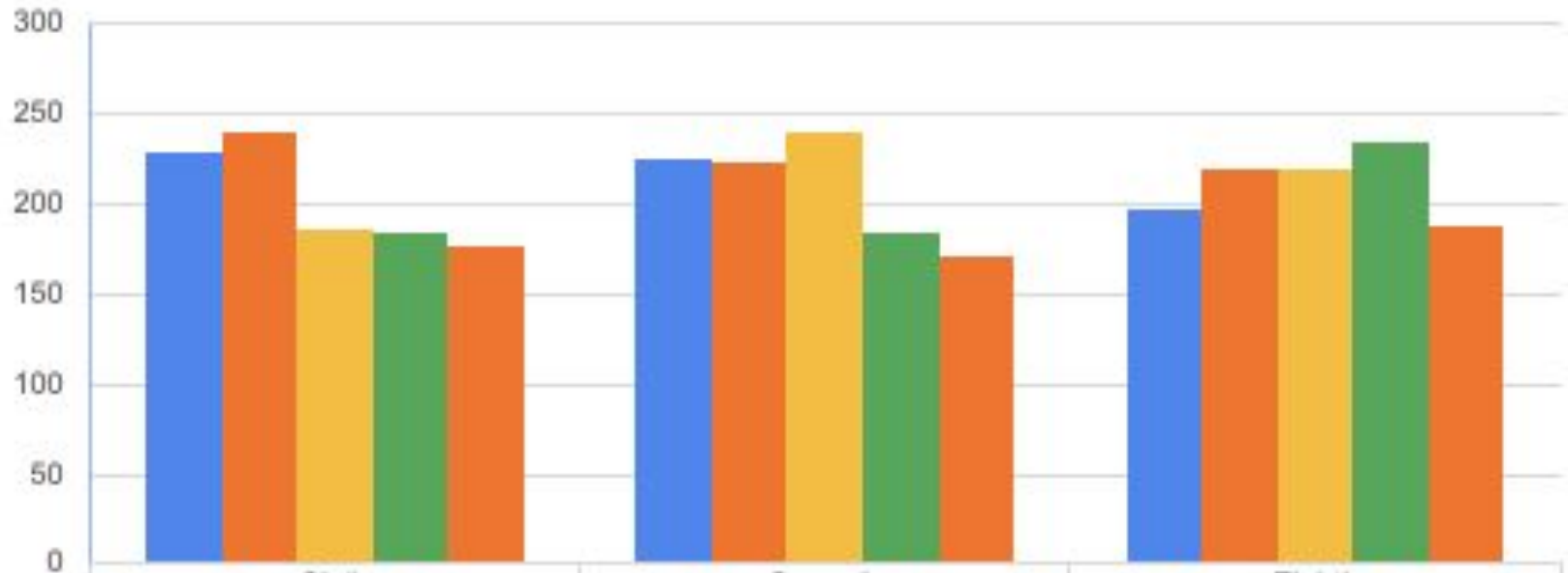
\* Theuerkauf also has 66 TK students enrolled

# Vargas Enrollment by Grade



	Kindergarten	First	Second	Thurd	Fourth	Fifth
2019-20	67	63	55	50	58	
2020-21	65	64	56	54	41	56
2021-22	53	62	47	53	50	43

## Crittenden Enrollment by Grade

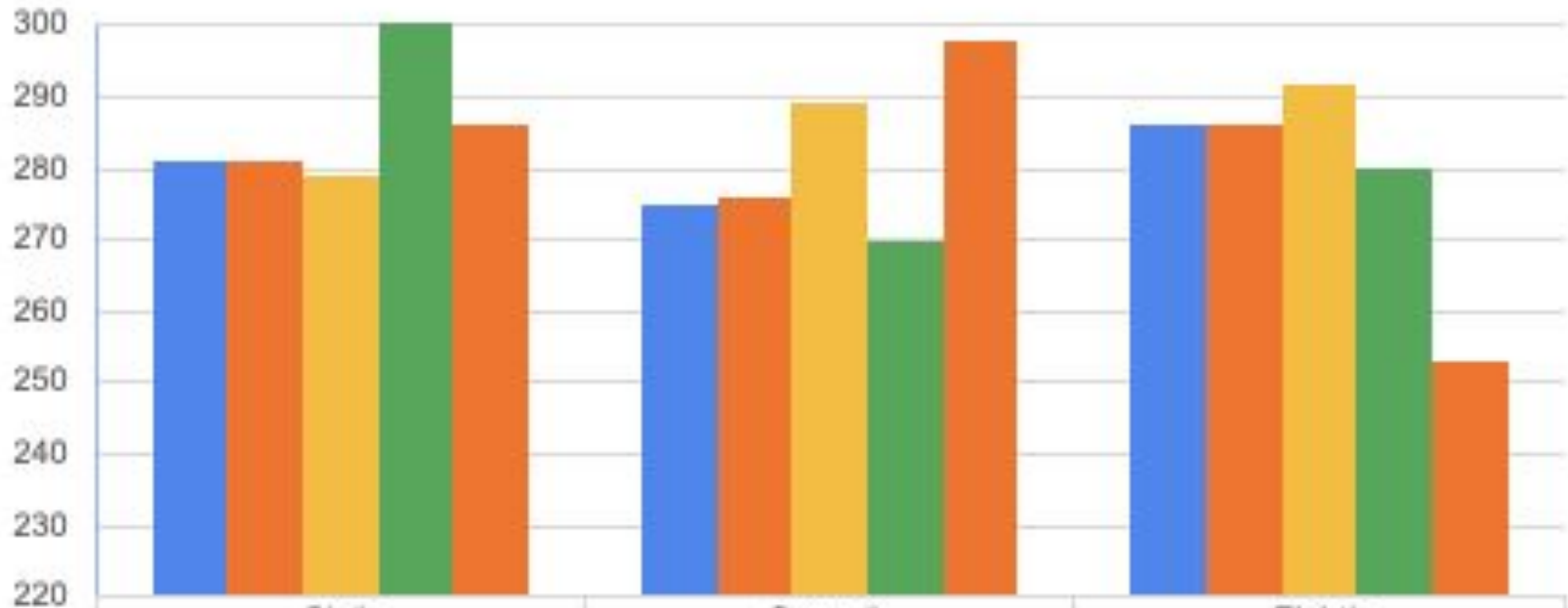


	Sixth	Seventh	Eighth
2017-18	228	226	198
2018-19	241	224	220
2019-20	187	240	219
2020-21	184	185	235
2021-22	176	171	188

Enrollment includes students in general education classes as well as SAI classes



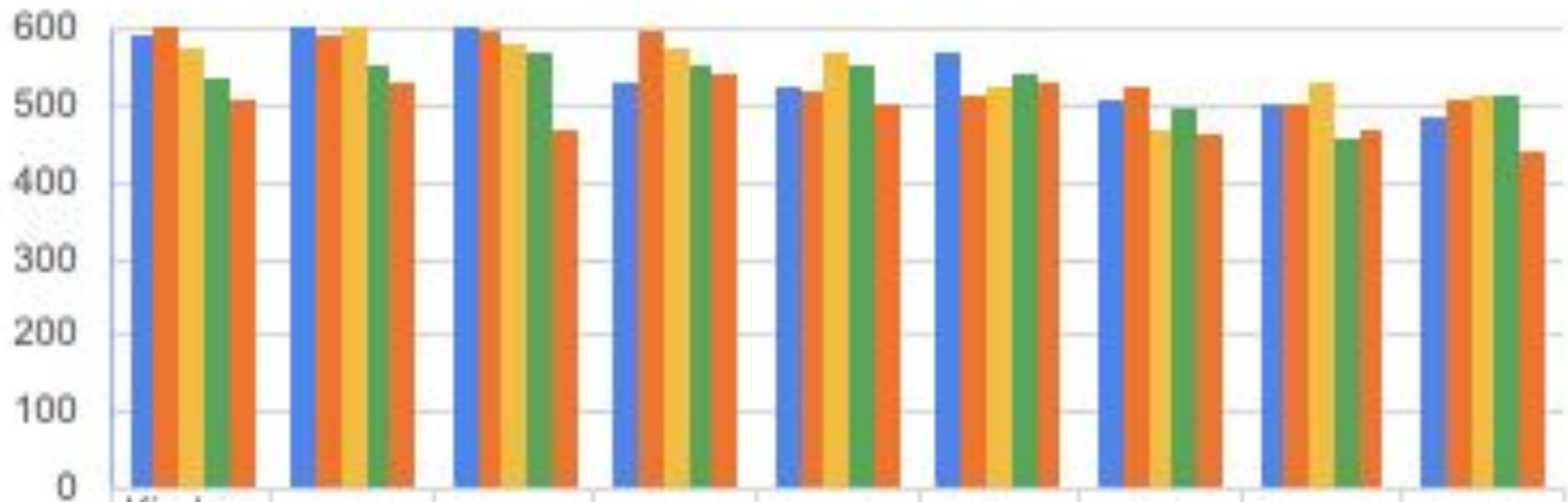
## Graham Enrollment by Grade



	Sixth	Seventh	Eighth
■ 2017-18	281	275	286
■ 2018-19	281	276	286
■ 2019-20	279	289	292
■ 2020-21	312	270	280
■ 2021-22	286	298	253

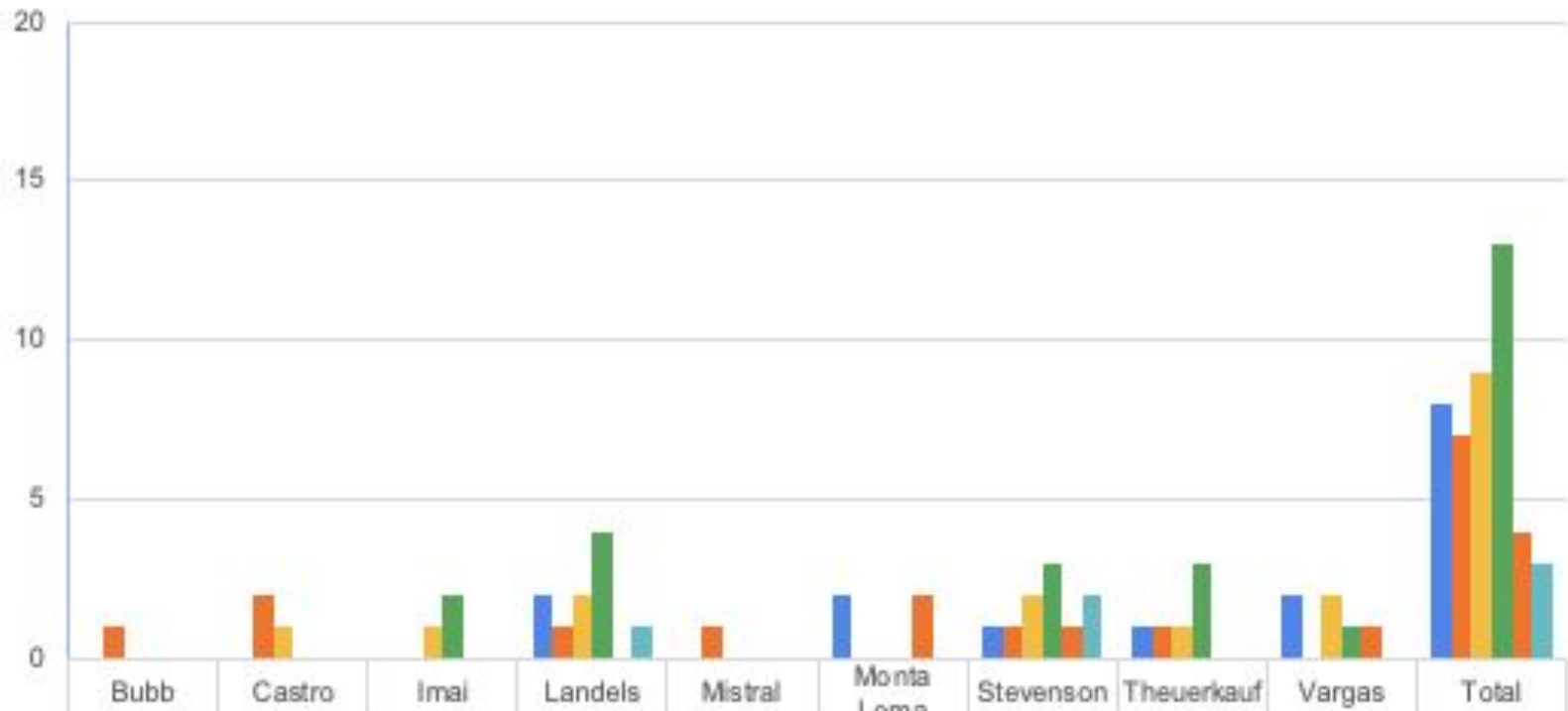
Enrollment includes students in general education classes as well as SAI classes

## Enrollment by Grade



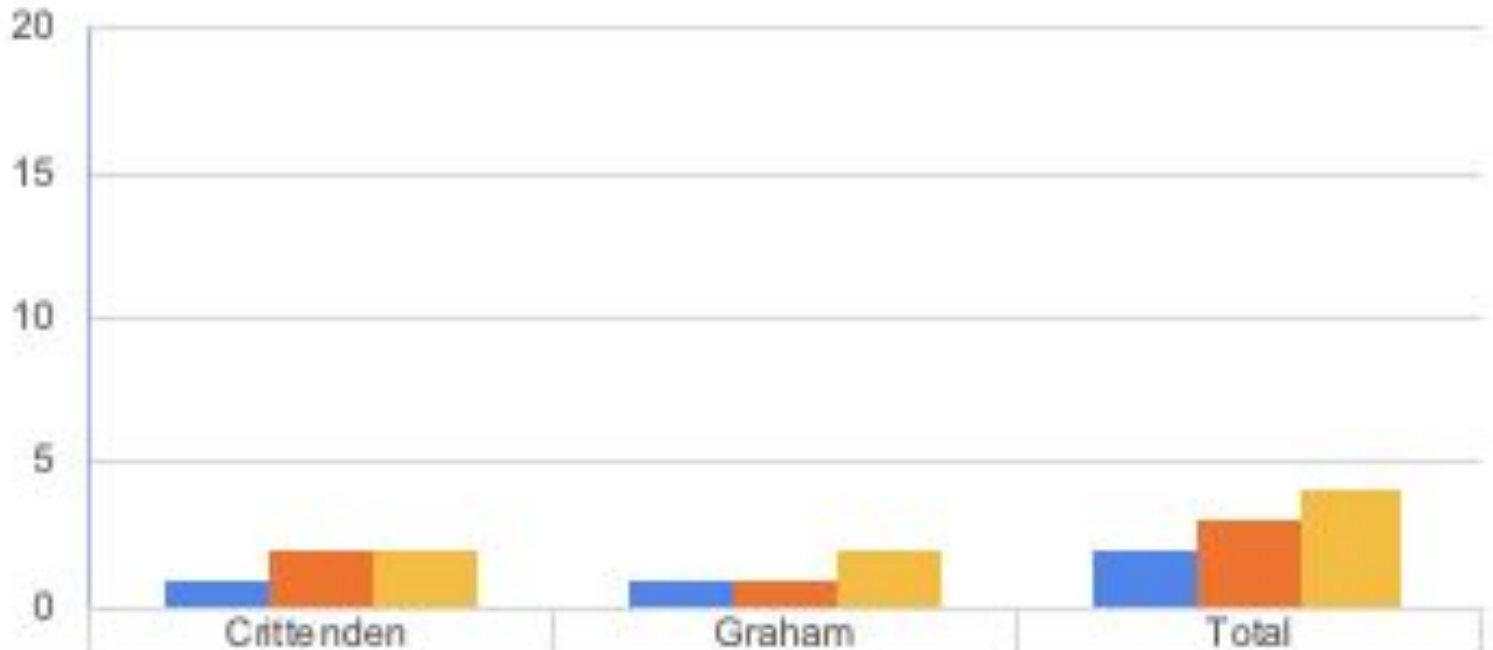
	Kinderg arten	First	Second	Third	Fourth	Fifth	Sixth	Seventh	Eighth
■ 2017-18	591	612	614	532	527	569	509	501	484
■ 2018-19	605	593	597	597	520	513	522	500	506
■ 2019-20	578	611	579	578	567	523	466	529	511
■ 2020-21	537	555	572	555	555	543	496	455	515
■ 2021-22	507	529	468	541	505	532	463	470	443

## Remote Independent Study Enrollment by Grade/Site Elementary

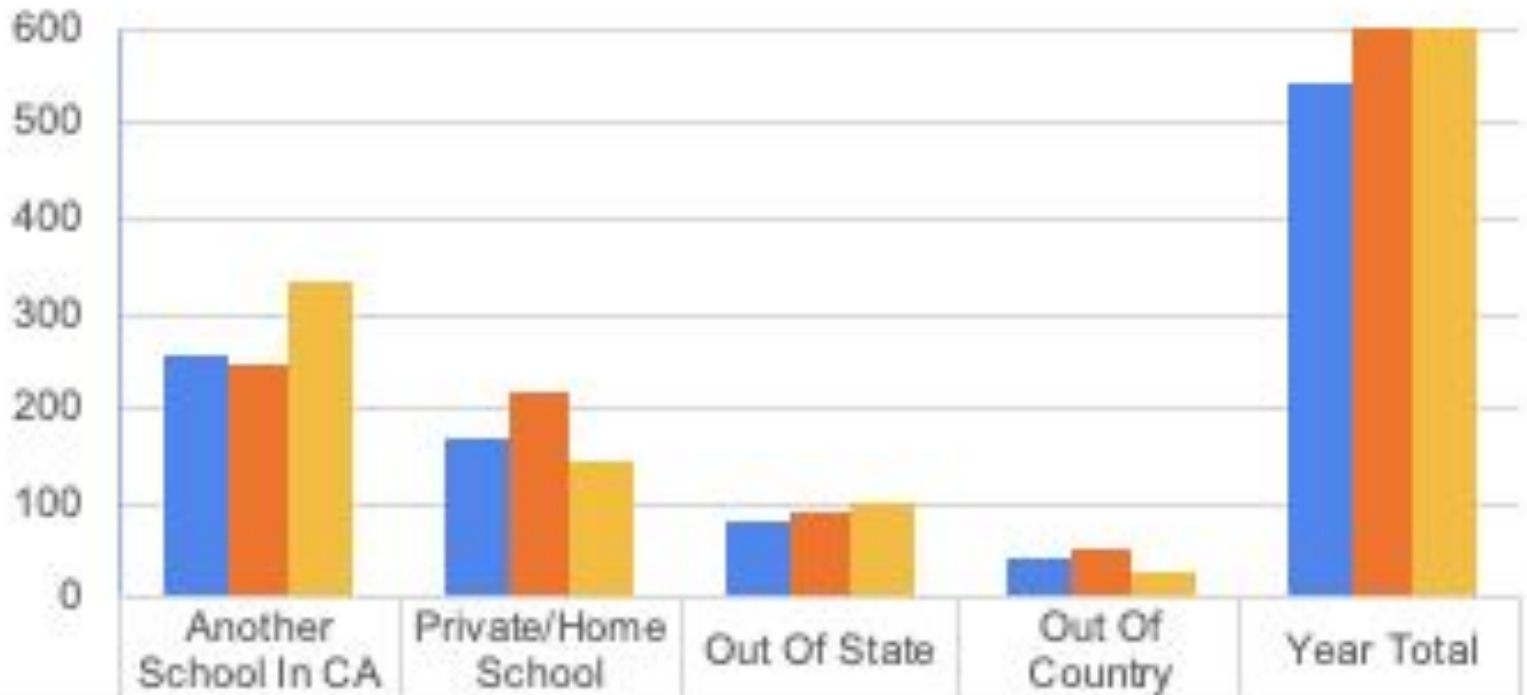


■ TK/Kindergarten				2		2	1	1	2	8
■ First Grade	1	2		1	1		1	1		7
■ Second Grade		1	1	2			2	1	2	9
■ Third Grade			2	4			3	3	1	13
■ Fourth Grade						2	1		1	4
■ Fifth Grade				1			2			3

## Remote Independent Study Enrollment by Grade/Site Middle School



## Withdrawal Reasons



■ 2019-2020	255	167	81	42	545
■ 2020-2021	245	217	92	55	609
■ 2021-2022	333	146	100	26	605



Mountain View  
Whisman  
School District

# Additional Data

# Free/Reduced Lunch County by Site

Free and Reduced Price Meals	2016-2017	2017-2018	2018-2019	2019-2020	2020-2021
Bubb	19%	19%	18%	19%	15%
Castro	83%	88%	85%	85%	84%
Crittenden	50%	49%	42%	41%	29%
Graham	31%	34%	32%	32%	28%
Imai	7%	9%	10%	6%	5%
Landels	27%	23%	19%	24%	26%
Mistral	41%	42%	45%	42%	44%
Monta Loma	43%	41%	39%	38%	30%
Stevenson	7%	7%	6%	6%	6%
Theuerkauf	66%	63%	55%	38%	32%
Vargas				24%	26%
<b>MVWSD Total</b>	<b>34%</b>	<b>34%</b>	<b>32%</b>	<b>31%</b>	<b>28%</b>

# Free and Reduced Lunch Counts

- It is early in the year and we don't have complete counts to share for 2021-22
- The Summer Feeding program has been extended
  - All students in MVWSD currently receive free meals
- The ability for anyone to receive a lunch, regardless of FRL status, has reduced the urgency for many families to apply
- Free and Reduced Lunch status is one of the categories that contributes to unduplicated pupil counts.
- It also contributes to eligibility for Title I funding
- FRL numbers were expected to decline for the 2020-21 year and may continue to decline as the free lunch program has been extended



# McKinney Vento Counts

McKinney Vento Counts	2016-2017	2017-2018	2018-2019	2019-2020	2020-2021
Bubb	3	3	6	3	4
Castro	19	26	51	61	54
Crittenden	10	14	18	21	20
Graham	9	13	21	32	35
Imai	1	0	1	3	7
Landels	7	8	4	11	9
Mistral	5	5	8	8	17
Monta Loma	9	10	6	8	9
Theuerkauf	12	13	6	9	13
Vargas				12	10
<b>MVWSD Total</b>	<b>75</b>	<b>93</b>	<b>128</b>	<b>171</b>	<b>178</b>



Mountain View  
Whisman  
School District

# Immunizations

# Immunizations

- California law requires children to be immunized.
  - Children are exempt from immunization requirements only if a parent or guardian submits a written statement from a licensed physician (M.D. or D.O.)
- Immunization requirements for admission to school in California for the 2021-2022 school year remain in place
- Some families had postponed immunizations last year due to concerns about visiting the doctor's office during the pandemic
- Some students were conditionally admitted in 2020-21 while we were in distance learning
- Immunizations must be complete before students are able to attend class in person

# Immunization Update

	# of missing immunizations as of 8/21/20	# of missing immunizations as of 9/7/20	# of pending immunizations as of 9/7/21
Bubb	8	5	0
Castro	38	11	0
Huff	8	7	0
Landels	17	15	0
Mistral	8	6	1
Monta Loma	15	10	0
Stevenson	6	2	0
Theuerkauf	12	8	0
Vargas	14	9	0
Crittenden	40	29	0
Graham	67	52	5
Total	233	157	0



Mountain View  
Whisman  
School District

# Additional Data

	K	1	2	3	4	5
<b>Class size caps at each grade</b>	<b>24</b>	<b>24</b>	<b>24</b>	<b>24</b>	<b>30</b>	<b>30</b>
BU	48	56	47	66	60	59
Teachers	2	3	2	3	3**	2
CA	36	36	43	44	45	63
Teachers	2	2	2	2	2	2
IM	59	62	64	68	82	76
Teachers	3	3	3	3	3	3
LA	77	61	51	62	59	76
Teachers	4	3	3	3	2	3
MI	67	65	52	59	50	53
Teachers	3	3	2	3	2	2
ML	42	38	44	45	38	41
Teachers	2	2	2	2	2	2
ST	71	71	63	84	84	54
Teachers	3	3	3	4	3	2
TH	TK62/K37	64	43	41	25	51
Teachers	TK4/K2	3	2	2	1	2
VA	51	62	47	52	49	43
Teachers	3	3	3*	2	2	2 <b>30</b>

# Staffing Information - Leaves for 2021-22

Current Leaves (Teachers)	
Maternity	20
Medical	8
Family	1
Personal	1
Other	1
Total	31

# Staffing Information - Leaves for 2021-22

- At the beginning of the year, all classroom positions were fully staffed.
- Teachers go out on leave at all different times for a variety of different reasons
  - By law MVWSD can't refuse most types of leave
  - Employees have the right to extend leave
  - For various reasons since the start of the year, we have had 31 teachers request a leave of absence
- Strategically in August MVWSD began actively posting for teaching positions at each level; regardless of vacancy.



# Substitute Coverage

Total # of subs	36 (5 will not take any assignments)
# active subs (have taken at least 2 assignments this year)	31
# authorized for long-term assignments	12 of the 31
# accepting long-term assignments	10 of the 31

Even though authorized, not all subs are willing to take an assignment. Several of our subs are taking classes and are only available on certain days each week. Others are uncomfortable coming to a site that has had an exposure during the week. Even though jobs are offered and requests are made, we have unfilled jobs daily. Long term assignments are a priority as students need a teacher for daily instruction.



Mountain View  
Whisman  
School District

# Summary and Next Steps

# Summary

- Enrollment has continued to decline since 2017-18
  - 313 fewer students in K-2
  - 50 fewer students enrolled in 3-5
  - 118 fewer students enrolled in 6-8
- Withdrawal reasons are fairly consistent with years past
  - We are seeing more students moving out of town and out of state and fewer choosing private or home school this year
- Fewer families have applied for free/reduced lunch, though we know that the needs exist in the community particularly given the continued increase in McKinney Vento families

# Next Steps

- Enrollment shifts have impacted staffing at sites
- We will continue working to place long term substitute teachers in classrooms left vacant by leaves
- We are continuing to advertise and hire substitute teachers
- We continue to monitor enrollment, new enrollments as well and withdrawals to make decisions about staffing at sites
- We continue to monitor leaves of absence and available coverage for classes